

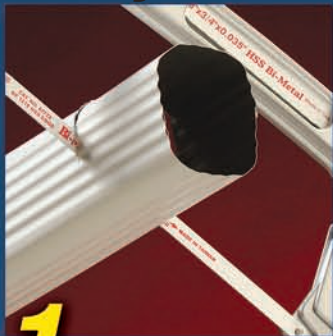
Designed for versatility.
Built to last™.

Nicholson™



4 SAWS IN 1

Only the Nicholson Pro Series gives you 4-in-1 versatility!



1 GENERAL USE



2 45° ANGLE



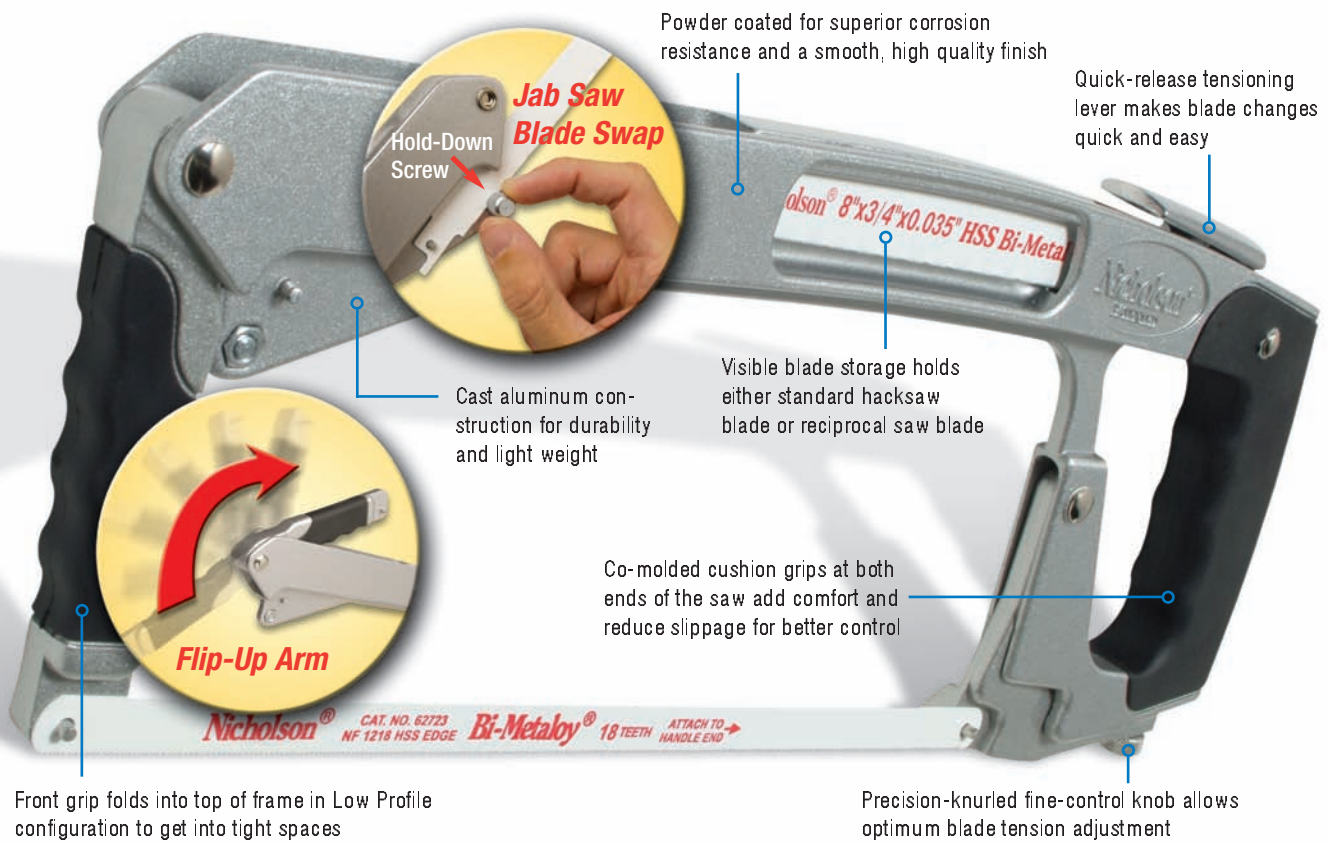
3 LOW PROFILE



4 JAB SAW



COOPER Hand Tools



Front grip folds into top of frame in Low Profile configuration to get into tight spaces

Precision-knurled fine-control knob allows optimum blade tension adjustment

The saw that knows no boundaries.

The new Nicholson™ Pro Series 4-in-1 hacksaw takes versatility and quality to an entirely new level. Its frame is designed to hold blades at a tension of up to 30,000 psi, for smooth, straight cuts, whether in standard, 45° angle, or low profile configurations. And while some other hacksaws have jab saw capability, the unique design of the Nicholson™ Pro Series accommodates a heavy duty reciprocal saw blade for maximum performance in jab saw applications. This unmatched performance is combined with design features that truly make the Nicholson 4-in-1 worthy of the Cooper Hand Tools Pro Series designation.

Pro Series: Innovation and Quality

Only when a product exhibits design features far beyond the best currently available and a quality level that is virtually unmatched, is it considered for the Pro Series designation. Pro Series products are simply the best that Cooper Hand Tools offers, and it is a very select group; currently only the Lufkin®, Wiss®, and Nicholson™ brands have Pro Series products. The Pro Series designation is more than just a name given to good products... it is a badge that has been earned.

Packaging that's ahead of the curve

The packaging for the 4-in-1 Nicholson™ Pro Series saw invites a hands-on experience. The foldaway front grip is fully operational and is called out with a TRY ME! label applied directly onto the product. The back handle is free of obstruction and can be grasped easily to feel the comfort of the cushion grip. High-impact graphics on front and back of protected display card fully explain features and benefits, and provide complete instructions for use.

Catalog Number	Description	Case
80975EU	4-in-1 Nicholson™ Pro Series Hacksaw Frame (comes complete with Nicholson™ Bi-Metaloy® 18-tooth 12-inch hacksaw blade with High Speed Steel edge and Nicholson™ 8" x 3/4" x 0.035" High Speed Steel Bi-Metal reciprocal saw blade)	4



Campbell® CaulkMaster® Crescent® Diamond® Erem® Kahnetics® Lufkin®
Nicholson® Plumb® H.K.Porter® Weller® Wire-Wrap® Wiss® Xcelite®

© 2005, Cooper Industries, Inc.

www.cooperhandtools.com/europe

GERMANY
Cooper Tools GmbH
Carl-Benz-Str. 2
74354 Besigheim
Tel: (07143) 580-0
Fax: (07143) 580-108

FRANCE
Cooper Tools S.A.S.
25 Av. Maurice Chevalier BP 46
77832 Ozoir-la-Ferrière Cedex
Tel: (0) 1.60.18.55.49
Fax: (0) 1.64.40.33.05

GREAT BRITAIN
Cooper Tools
A Division of Cooper (GB) Ltd.
4th Floor Pennine House
Washington, Tyne & Wear
NE37 1LY
Tel: (0191) 419 7700
Fax: (0191) 417 9421

ITALY
Cooper Italy S.r.l.
Viale Europa 80
20090 Cusago (MI)
Tel: (02) 9033101
Fax: (02) 90394231

THE NETHERLANDS
Cooper Tools B.V.
Phileas Foggstraat 16
7821 AK Emmen Drenthe
Tel: (0591) 66 75 00
Fax: (0591) 66 75 95